



Teleconnect

by Budget Telecom

ANGLOPACK

Quick Setup Guide



Comtrend CT-6382T modem

Required configuration

- Landline, non-shared analogue (*excluding "Numeris" and switchboard*)
- Classic or DECT telephone (*optional*)
- Computer with the following characteristics:
 - PC running Windows XP, Vista, Seven or 8
 - Memory: 4 GB recommended
 - Ethernet port (*preferred*)
 - Wi-Fi (*optional*)



Apple computers running Mac/OS or computers running Linux are not supported.
It works though but our technical support is not guarantee in this case

Replace the dashes with your France Telecom telephone number

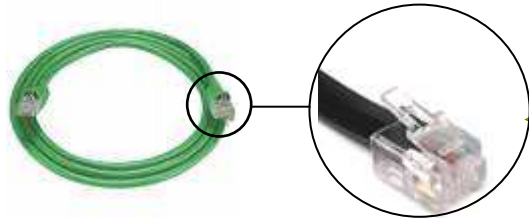
ADSL Username	_____	@budget.btadsl
ADSL Password	_____	

The system is supposed to log in by itself without asking you these information

2

Content of the package

1



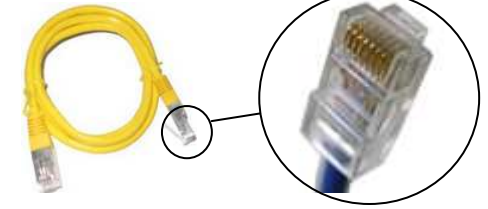
1 x RJ11 telephone cable
RJ11 male/male connectors, green or grey

2



1 x Male French telephone adapter
Male plug / RJ11 female, beige

3



1 x Ethernet RJ45 cable
RJ45 male/male connector, yellow

To be connected, if not yet

4



1 x External French ADSL filter
Male/female plug adapter / RJ11 female

5



1 x Wi-Fi Modem Router
Comtrend CT-6382T

6



Electrical power supply and cable
220V power supply

3

Installation

1/ Configure your computer network

- The Internet Protocol properties should be set to:
 - **obtain an IP address automatically**
 - **obtain DNS server address automatically**

Please consult your computer system instructions in order to configure the Internet Protocol properties as needed because the configuration process & information varies depending on your computer OS and version. Also: this is for Ethernet configuration only; USB configuration slightly differs, please contact technical support for more information.

2/ Connect your equipment & phone

- As described on the 'Connexion Map' page
- Due to auto configuration mode, the modem may self-reboot, so please wait until the DSL and VOIP lights are both green and steady (about 5 mn)
- The front panel LEDs as shown below mean "connection OK":
 - **POWER : on & green**
 - **ADSL : on, green & steady** (if blinking = synchronizing, please wait)
 - **INTERNET : on & green, eventually blinking** (if red or off = trouble, contact support)
 - **LAN : on, green & blinking** (if you use Ethernet cable connection)
and/or
 - **WLAN : on, green & blinking** (if you use Wi-Fi connection)

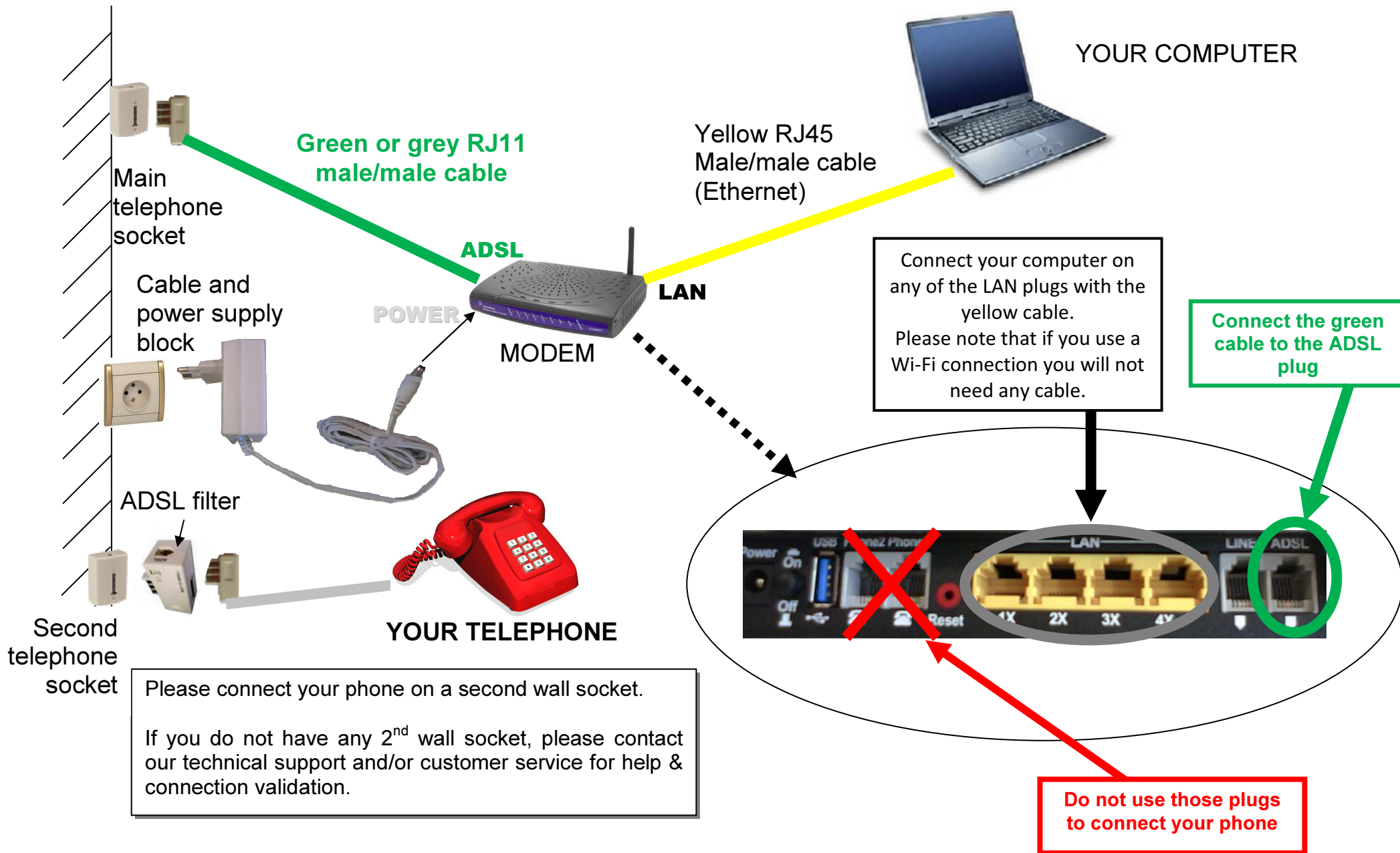


LAN, WLAN and INTERNET LEDs : when these LEDs are blinking that means that data is transmitted or received over LAN or WLAN between your modem, your computer and the internet

3/ Login procedure

- The login information is auto-configured in your modem. You do not have to enter any id/password, even at first use. Just visit a Web site (e.g., www.google.com) to check that everything works fine.
- If not, please contact technical support (see contact n° on page 6) with the ADSL user name and password (as mentioned on the first page of this doc).

Connection map



5

Wi-Fi configuration (optional)

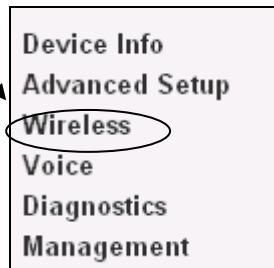
For more convenience the Wi-Fi interface of your modem is enabled. But you can choose to enable/disable it as wanted. See below.

1/ Access the modem configuration interface

- In order to do so, open Internet Explorer (or any similar Web browser)
 - in the address field type: <http://192.168.1.1>
 - a login dialog box appears
 - please enter the following information

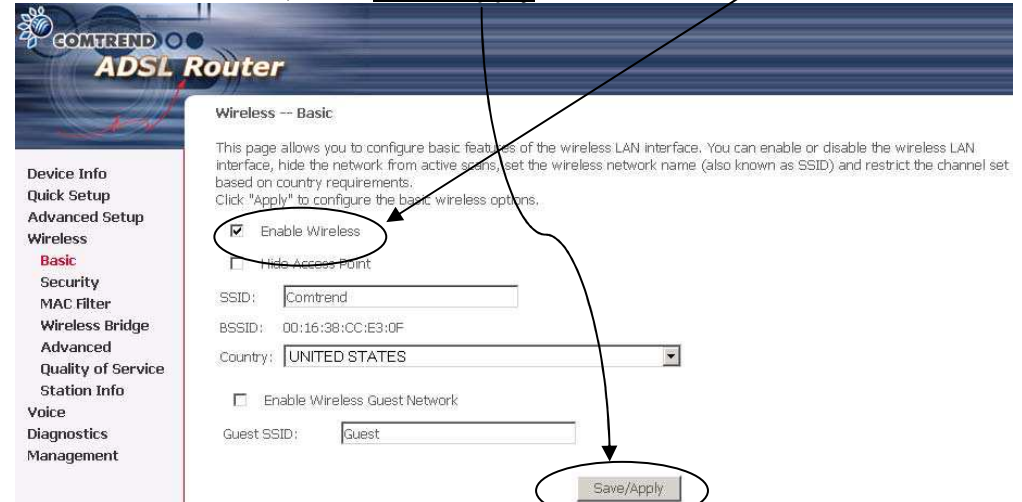
Login Profil User:	root
Password Profil User:	12345

- Once connected to the modem configuration interface, please click on "Wireless" in the left-side menu (as described below)



2/ Enable/Disable Wireless

- The following screen displays. Tick the 'Enable Wireless' check box as wanted, then Save/Apply.



3/ Follow your computer Wi-Fi instructions

- You now need to configure your PC Wi-Fi utility. Each Wi-Fi enabled PC has its own, so please consult your PC instructions guide or your PC hotline if you are not sure how to do that.

- Connect to the **BUDGETBOX-COMTREND** network

- During this process, you will be asked for a WEP encryption key. Type in the following keys in capital letters without spaces:

BB123456789

6

What to do in the event of a problem?

Event	Test procedure or possible cause
The POWER LED is not lit	Check that the power supply block is properly plugged in. Check that the power supply cable is properly connected to your terminal. Check that the electrical socket is working correctly and that your electrical supply is on (power cut...).
I can't connect to the Internet in Ethernet mode	Check that the black (or yellow) Ethernet cable is properly connected to your computer and Modem. Also check that your computer is properly configured (network configuration menu).
I can't configure my Modem in Wi-Fi mode	By default, the Wi-Fi port is enabled. But if it is not, feel free to activate it through the Web interface by clicking on the "Wireless" menu and then ticking the "Enable Wireless" box (refer to the Wi-Fi configuration page).
I can't use my Modem in Wi-Fi mode	First check that Wi-Fi is enabled both on your computer and modem. Then check that the WEP encryption key has been properly entered in your Wi-Fi receiver.
Wi-Fi is properly configured but I still can't connect in Wi-Fi mode	Check that the Modem is working properly, that your computer's Wi-Fi adapter uses WEP 128 encryption and that you have properly entered the WEP key printed on this document (page 5 section 3). Then eventually, move your Wi-Fi terminal closer to the Modem.
I can't connect multiple computers to the Modem	Check that each new computer is correctly connected to the Modem (either in Ethernet, USB or Wi-Fi mode) and that the used mode is correctly configured on each computer.
I can't surf the Internet	Reboot the modem using the ON/OFF switch on the rear face of the modem
My Internet page "freezes"	Reboot the computer.
When I pick up the telephone, I hear a loud buzz	You probably have not placed an ADSL filter on your secondary telephone wall socket.

FREE Technical Support Hotline

open Monday- Friday 9am-5pm

by phone: 0805 111 555 (free call)

or by e-mail: support@teleconnect.fr

For non-technical issues: 0805 02 4000 (free call)